



CITY OF NAPOLEON
 BUILDING & ZONING DEPARTMENT
 255 W. Riverview Avenue, PO Box 151, Napoleon, OH 43545
 Phone: 419-592-4010 - Fax: 419-599-8393

SG2010-7

APPLICATION FOR SIGN PERMIT

LOCATION OF PROPERTY: 1815 Scott St.

OWNER NAME: Walmart Stores East LP PHONE: (479)273-4000

OWNER ADDRESS: 702 Sw 8th St. Bentonville, AR 72716

CONTRACTOR NAME: Adams Signs PHONE: (330) 832-9844

IS CONTRACTOR REGISTERED WITH THE CITY OF NAPOLEON? YES NO - see attached app.

SIGN INFORMATION

TYPE: POST WALL GROUND AWNING

DIMENSIONS: See attached = TOTAL S.F. 452.38

** PLEASE INCLUDE ANY AND ALL SITE PLANS AND PLANS OF ABOVE SIGNS.

FEES:

\$35.00 BASE UP TO 50 S.F. OF SIGN, PLUS \$0.20 PER ADDITIONAL S.F., NOT TO EXCEED \$150.00

\$5.00 FLAT FEE FOR TEMPORARY SIGNS, TEMPORARY SPECIAL EVENT SIGNS, AND PORTABLE SIGNS OTHER THAN THOSE EXEMPT FROM FEE. (SEE BELOW)

NO FEE REQUIRED FOR TEMPORARY AND EASILY REMOVABLE 1ST AMENDMENT SIGNS, OR SIGNS RELATED TO RELIGIOUS OR CHARTIABLE CAUSES OR EVENTS.

[Signature]
 APPLICANTS SIGNATURE

6-24-10
 DATE

SCANNED



DATE	12/11/14
DRAWN BY	AM
PROJECT	1322000
ISSUE	1
ISSUED FOR	CONTRACT

NO.	DESCRIPTION
1	REVISION
2	REVISION
3	REVISION
4	REVISION
5	REVISION
6	REVISION
7	REVISION
8	REVISION
9	REVISION
10	REVISION
11	REVISION
12	REVISION

WALMART
NAPOLÉON, OHIO
STORE NO. 1416

NO.	DESCRIPTION
1	REVISION
2	REVISION
3	REVISION
4	REVISION
5	REVISION
6	REVISION
7	REVISION
8	REVISION
9	REVISION
10	REVISION
11	REVISION
12	REVISION

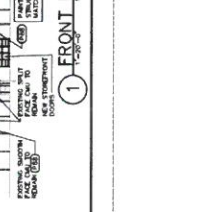
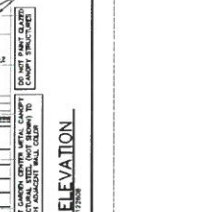
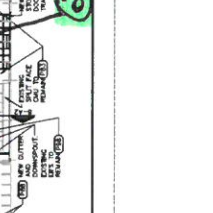
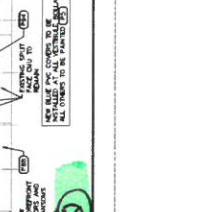
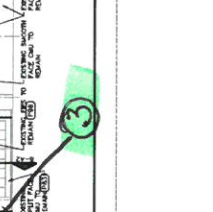
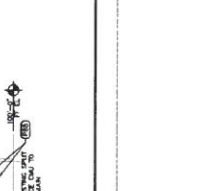
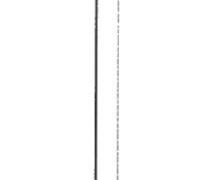
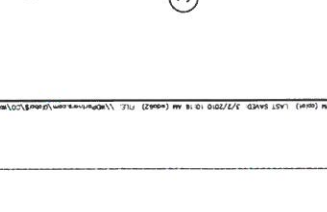
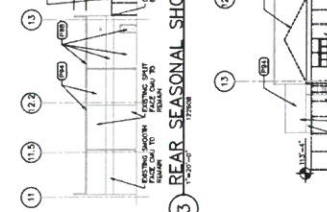
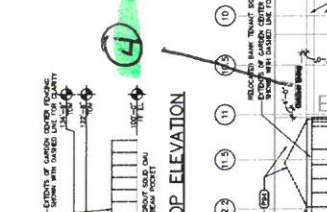
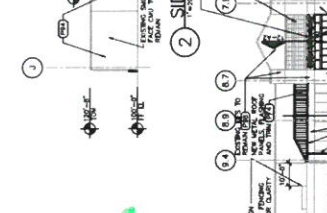
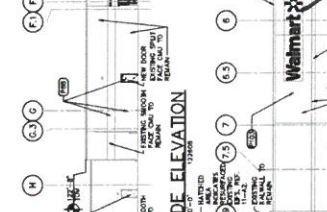
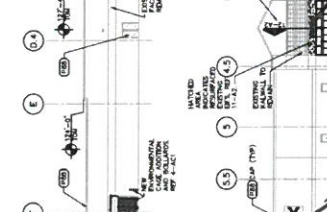
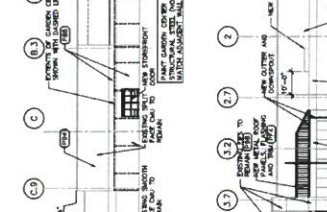
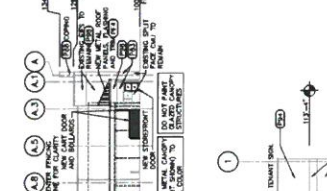
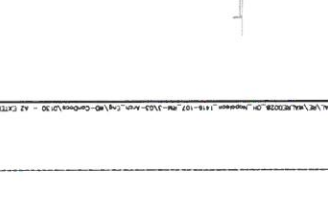
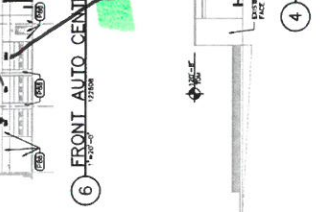
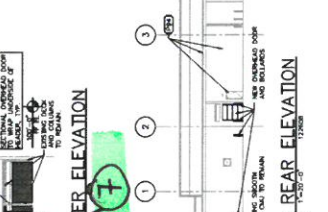
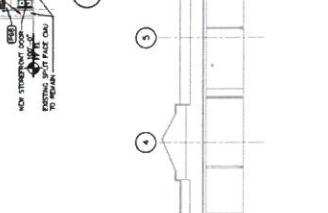
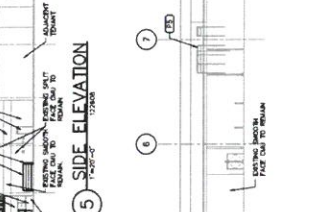
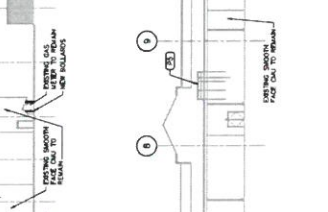
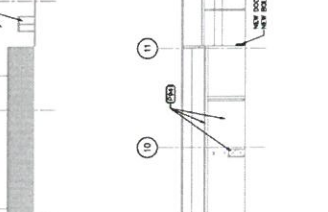
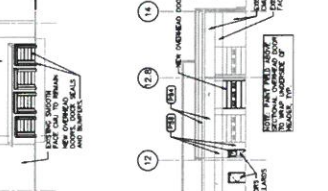
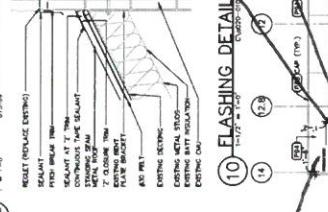
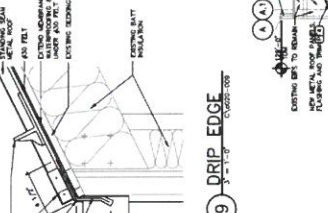
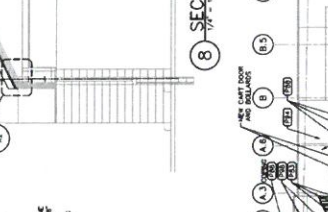
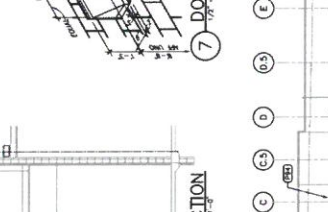
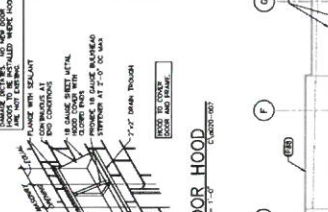
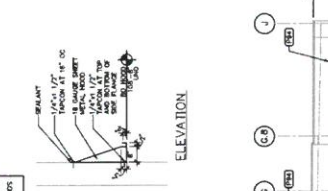
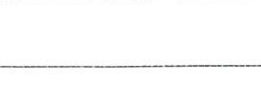
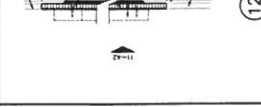
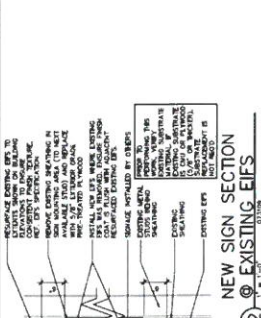
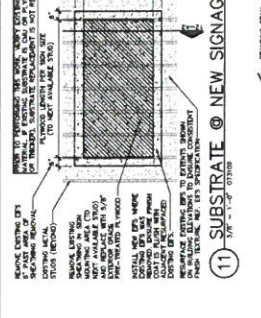
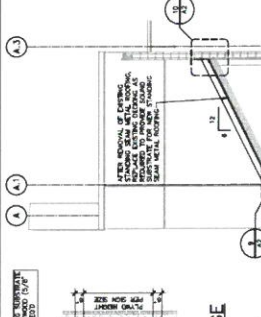
EXTERIOR ELEVATIONS
SHEET A2

SHEET NOTES

1. ALL NEW WORK SHALL BE DONE IN ACCORDANCE WITH THE LATEST EDITIONS OF THE INTERNATIONAL BUILDING CODES (IBC) AND THE NATIONAL FIRE PROTECTION ASSOCIATION (NFPA) CODES.
2. ALL MATERIALS SHALL BE APPROVED BY THE ARCHITECT AND SHALL BE SUBMITTED TO THE ARCHITECT FOR APPROVAL PRIOR TO INSTALLATION.
3. ALL WORK SHALL BE DONE IN ACCORDANCE WITH THE LATEST EDITIONS OF THE INTERNATIONAL BUILDING CODES (IBC) AND THE NATIONAL FIRE PROTECTION ASSOCIATION (NFPA) CODES.
4. ALL WORK SHALL BE DONE IN ACCORDANCE WITH THE LATEST EDITIONS OF THE INTERNATIONAL BUILDING CODES (IBC) AND THE NATIONAL FIRE PROTECTION ASSOCIATION (NFPA) CODES.
5. ALL WORK SHALL BE DONE IN ACCORDANCE WITH THE LATEST EDITIONS OF THE INTERNATIONAL BUILDING CODES (IBC) AND THE NATIONAL FIRE PROTECTION ASSOCIATION (NFPA) CODES.
6. ALL WORK SHALL BE DONE IN ACCORDANCE WITH THE LATEST EDITIONS OF THE INTERNATIONAL BUILDING CODES (IBC) AND THE NATIONAL FIRE PROTECTION ASSOCIATION (NFPA) CODES.
7. ALL WORK SHALL BE DONE IN ACCORDANCE WITH THE LATEST EDITIONS OF THE INTERNATIONAL BUILDING CODES (IBC) AND THE NATIONAL FIRE PROTECTION ASSOCIATION (NFPA) CODES.
8. ALL WORK SHALL BE DONE IN ACCORDANCE WITH THE LATEST EDITIONS OF THE INTERNATIONAL BUILDING CODES (IBC) AND THE NATIONAL FIRE PROTECTION ASSOCIATION (NFPA) CODES.
9. ALL WORK SHALL BE DONE IN ACCORDANCE WITH THE LATEST EDITIONS OF THE INTERNATIONAL BUILDING CODES (IBC) AND THE NATIONAL FIRE PROTECTION ASSOCIATION (NFPA) CODES.
10. ALL WORK SHALL BE DONE IN ACCORDANCE WITH THE LATEST EDITIONS OF THE INTERNATIONAL BUILDING CODES (IBC) AND THE NATIONAL FIRE PROTECTION ASSOCIATION (NFPA) CODES.
11. ALL WORK SHALL BE DONE IN ACCORDANCE WITH THE LATEST EDITIONS OF THE INTERNATIONAL BUILDING CODES (IBC) AND THE NATIONAL FIRE PROTECTION ASSOCIATION (NFPA) CODES.
12. ALL WORK SHALL BE DONE IN ACCORDANCE WITH THE LATEST EDITIONS OF THE INTERNATIONAL BUILDING CODES (IBC) AND THE NATIONAL FIRE PROTECTION ASSOCIATION (NFPA) CODES.

COLOR LEGEND

1. NEW WORK
2. EXISTING WORK
3. EXISTING WORK TO BE REPAIRED
4. EXISTING WORK TO BE DEMOLISHED



Not to Scale

15-18"



4 24" OUTDOOR LIVING SIGNAGE
WHITE LTR. - 68.46 SQ.FT.
022908



3 24" MARKET SIGNAGE
WHITE LTR. - 19.89 SQ.FT.
021108



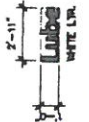
2 24" HOME & PHARMACY SIGNAGE
WHITE LTR. - 82.49 SQ.FT.
128608



9 18" TIRE & LUBE SIGNAGE
WHITE LTR. - 13.24 SQ.FT.
022908



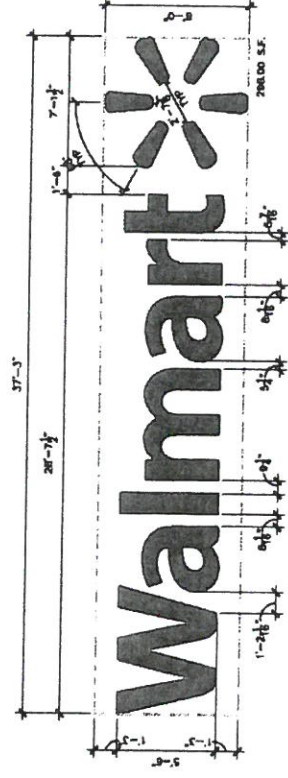
8 12" TIRE SIGNAGE
WHITE LTR. - 2.26 SQ.FT.
022908



7 12" LUBE SIGNAGE
WHITE LTR. - 2.82 SQ.FT.
022908

6 NOT USED

5 NOT USED



1 5'-6" WALMART SIGN
WHITE LTR. - 1129.00 SQ.FT.
112908

SIGNAGE
DETAILS,
NOTES AND
SCHEDULES

SHEET:
A2.1